

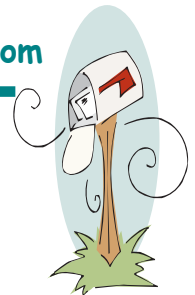
## Addresses and telephone numbers:

Vision Management Consulting, LLC, PO BOX 515, Colts Neck, New Jersey 07722  
732.922.6462 office; 732.922.1686 fax  
www.visionplanet.com \* info@visionplanet.com \* support@visionplanet.com

## What's inside this edition:

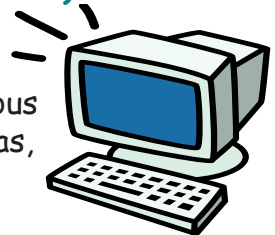


- \*IDEA 2004 and NJAC 6A:14
- \*Program Enhancements
- \*NJ Smart - Dec 1st (ADR)
- \*Key components for a successful EOY Report
- \*A Bit of Trivia



## Highlighting an exceptional member of our team...

**Dan Anderson** - Dan has been working with Vision Management Consulting (VMC) for approximately 9 years. Dan's expertise is in web design and development. Dan graduated from Penn State with a Computer Science degree. Dan also owns his own business; NetProfits Internet Consulting. Dan has developed various components of the IEP PlaNET... databases along with providing support, ideas, and recommendations.. Dan resides in Hillsborough, New Jersey with his wife and three (3) teenagers.



## IDEA 2004 and N.J.A.C. 6A:14

We completed and rolled out the changes based on IDEA 2004 and NJAC 6A:14 in August 2007. It appears that the changes were easily adapted by our users with minimal training and support. While we believe we covered all appropriate updates and changes we appreciate the feedback our users provide, please keep up the good work. If you have any questions or concerns please contact us, we are here to continue to make our program your program of choice!

## Program Enhancements...

Based on the requests of our users, and requirements of NJAC 6A:14 we continue to enhancement our program, the following includes our most recent updates:

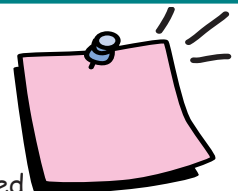
### Program Enhancements:

1. Mozilla Firefox has been added as our Mac browser.
2. We are currently testing IE7 however many users have already made the move from IE6 to IE7. Currently we have not encountered any problems with moving forward.
3. The addition of the NJ Smart .CSV file for special education.

### IEP Document:

1. Under "Transition General" we have added a component to the "Course of Study" field to include a text field for "Related Strategies and/or Activities."

2. Under the "Post Secondary Transition Goal" section we have added various goals under specific designated areas, which include but are not limited to; Employment, Independent living, Education/Training...
  3. Under the "Speech IEP" we have removed the LRE section.
  4. We have added the "Preschool Expectations and Learning Outcomes" to the Core Curriculum pop-up window for goals.
- Program enhancements are ongoing, look for email notifications as they are released...**



## NJ Smart-Dec 1st (ADR)..

(Special Education vendors receive an invitation to participate in the NJ Smart program).

In November 2007 we were invited to take part in the special education component of the Dec. 1st (ADR) submission. This roll out was scheduled for February 2008. We are happy to announce that we made the deadline and that we believe all of our clients were successful at submitting their reports, maybe not all on time but eventually they all were able to submit successfully.

We are also happy to announce that most of the required fields, needed for submission, were already part of our database. We made a few additions to **IEP PlaNET** which we will list below. While completing the additions, we fine tuned the existing fields in an effort to make future submissions as goof proof as possible.

**Changes included but were not limited to the following:**

### Evaluation Plan Document:

1. Initial Consent to Evaluate - now is a required field on all "Initial" Evaluations.

### Classification Summary Document:

1. Reevaluation Date (date student last reevaluated) - new field in **PlaNET** and is required on all "Reevaluation" Classifications.

2. Eligibility Determination Date - new field in **PlaNET** and is required on all "Initial" Classifications.

### IEP Document:

1. "Initial IEP Meeting Date" - new field in **PlaNET** and is required on all "Initial" IEP's.

2. Consent for Initial IEP - now a required field on all "Initial" IEP's.

### Misc. Changes:

1. All the above fields have been added to the Student Demographic page in order to allow districts the opportunity to add historical information on incoming students.

2. The following fields have also been added to the student demographic page:

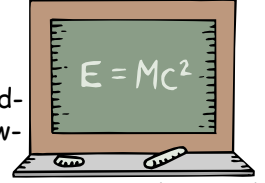
- a. State Identification Number
- b. LEP Status
- c. Ethnicity: Hispanic
- d. Reason for Late Eligibility Determination
- e. Grades:
  - i. 3H
  - ii. 3F
  - iii. 4H
  - iiii. 4F



**Look for updates in our next issue of the "PlaNET" and in periodic email notifications.**

## Don't forget the key components for a successful EOY Report...

We have taken the time to make the State & Federal reports as user friendly as possible. Provided you have completed the following global requirements you should not have any problems generating a clean and accurate report:



### Student Demographics:

-Termination Reason and Date for all students who left the district throughout the school year

### Documents:

-Current "Evaluation Plans" are tagged as "In-force" and tagged appropriately, ex. Initial or Re-eval.

-Current "Classification Summaries" are tagged as "In-force" and tagged appropriately, ex. Initial or Re-eval.

-Current "IEP's" are tagged as "In-force" and tagged appropriately, ex. Initial, Annual, or Re-eval.

-Classification Summary documents prepared for all students who were "Declassified" during the year.

**Be sure to print the "Exceptions Report" for further information!**

**Please refer to cheat sheet in the User's Manual for detailed information on other requirements!**

## A Bit of Trivia...

(look for the answer on our website under **News/FAQ's**)

**How much dirt would be in a hole 6 feet deep and 6 feet wide that has been dug with a square edge shovel?**

We have lots more information about **IEP PlaNET** and you can look at sample reports or request a free trial use of the system. Even if you are not interested right now, we have a great resource of reference sites to visit on subjects related to Special Education.

Visit our Website  
([www.visionplanet.com](http://www.visionplanet.com))

**VISION** Management Consulting, LLC

PO BOX 515  
Colts Neck, NJ 07722  
(732) 922 6462  
Fax (732) 922 1686  
[www.visionplanet.com](http://www.visionplanet.com)